

## Get in touch

Call us on 1800 431 157 to make an appointment to see a FASS lawyer in one of our offices:



**Hobart**

**Launceston**

**Burnie**

You can attend a walk in clinic at the Courts each Monday between 1pm and 2pm.

- **Hobart** (walk in clinic available)  
Federal Circuit and Family Court of Australia  
1st Floor, 39–41 Davey Street
- **Launceston** (walk in clinic available)  
Federal Circuit and Family Court of Australia  
Henty House  
Lvl 1, 1 Civic Square

Tasmania Legal Aid acknowledges and pays our respect to the Palawa/Tasmanian Aboriginal people as the Traditional Custodians of the land and waters of Lutruwita/Tasmania, where we live and work.



SCAN ME



**1800 431 157**



**FASS@legalaid.tas.gov.au**



**www.legalaid.tas.gov.au**

# Are you affected by family violence and need legal support?



**We can help**

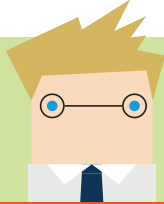


**Tasmania Legal Aid**



## Family Advocacy & Support Services

Our Family Advocacy and Support Service (FASS) is a free service to help people affected by family violence with their family law issues. FASS has lawyers and social workers who work together to help you.



### Our FASS Lawyer can:

- ✓ Give legal advice and information about legal issues relating to separation and parenting arrangements, family violence and child protection
- ✓ Draft simple court documents
- ✓ Advise you what information and evidence you need to present
- ✓ Attend court with you
- ✓ Provide information and refer you to other services who can help.

### Our FASS Lawyer can not:

- ✗ Assist you with complex documents and affidavits in non-urgent legal issues
- ✗ Represent you in contravention applications and final hearings
- ✗ Act as an Independent Children's Lawyer
- ✗ Offer ongoing advice or help.



### Our FASS Social Support Worker can:

- ✓ Support you before, during and after court
- ✓ Make a safety plan with you for when you go to court
- ✓ Engage with court and security staff
- ✓ Inform you about other services available to you
- ✓ Give you direct referrals to other services.

### Our FASS Social Support Worker can not:

- ✗ Give legal advice
- ✗ Provide ongoing counselling.

Tasmania  
**Legal Aid**

A starting place  
for everything legal