

# Just Healthy Families Overview of Services

January – December 2024

Just Healthy Families (JHF) is a Health Justice Partnership that embeds free legal help in the health and social service settings with the aim of reducing family violence for all Tasmanians.

It is a collaboration between Women’s Legal Service Tasmania (WLST) and Tasmania Legal Aid (TLA) in partnership with Child and Family Learning Centres (CFLC) and the Hobart Women’s Shelter (HWS).

Just Healthy Families commenced in January 2022 as a two-year pilot with funding from the Tasmania Community Fund and the Commonwealth Government. In 2024, the Tasmanian Government committed funds to continue the work of the Just Healthy Families Service.

The core services are delivered by three specialist family violence lawyers who visit nineteen health and social service partner sites across Tasmania on a regular basis. The full list of Tasmanian organisations that have sought assistance from the JHF lawyers in 2024 are listed at the end of this report.

Evaluation services are provided as in-kind contributions by the University of Tasmania Schools of Nursing and Medicine as well as Law & Development Partners.

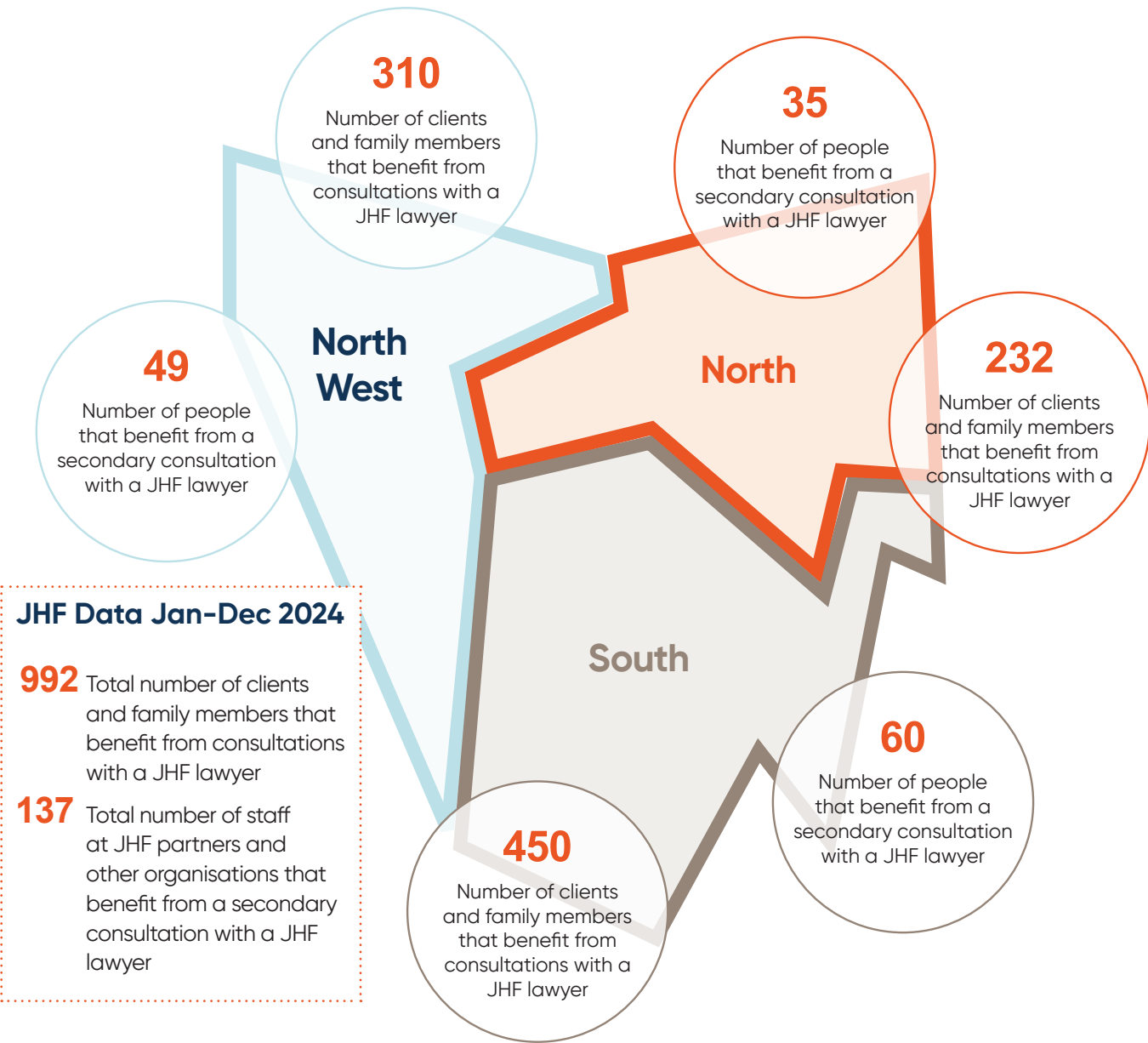
From January to June 2024 the following services were delivered across Tasmania:

- 908** legal services delivered by the JHF specialist family violence lawyers through direct client consultations and secondary consultations with partners
- 992** unique clients, dependants and family members assisted
- 144** secondary consultations with partner organisations
- 19** Child and Family Learning Centres supported by the JHF lawyer visits
- 40+** Partners across Tasmania request support from JHF lawyers in 2022

More information on the work of Just Healthy Families, including Quarterly Updates, can be seen [here](#).

## Just Healthy Families Services Overview

January – December 2024



	47%	of Just Healthy Families Services are delivered face to face with the client
	24%	of Just Healthy Families Services are delivered by phone or teleconference with the client
	27%	of Just Healthy Families Services are delivered by letter or email either to or on behalf of the client



Evaluation Partners



**Just Healthy Families**  
TASMANIA LEGAL AID +  
WOMEN'S LEGAL SERVICE TASMANIA

Disclaimer: Every attempt has been made to present an accurate picture of services provided through JHF in the 21 months since January 2022.



## North West

### 1 East Devonport CFLC

Client Legal Services	57
Clients	32
Children	63
Secondary Services	11

### 2 Burnie CFLC

Client Legal Services	49
Clients	24
Children	37
Secondary Services	6

### 3 Queenstown CFLC

Client Legal Services	46
Clients	8
Children	11
Secondary Services	7

### 4 Wynyard (Iarapi) CFLC

Client Legal Services	19
Clients	10
Children	14
Secondary Services	1

### 5 West Ulverstone (Blue Gum) CFLC

Client Legal Services	13
Clients	10
Children	20
Secondary Services	2

## North

### 6 Ravenswood CFLC

Client Legal Services	23
Clients	16
Children	33
Secondary Services	5

### 7 East Tamar (muylatina) CFLC

Client Legal Services	24
Clients	12
Children	63
Secondary Services	1

### 8 Georgetown CFLC

Client Legal Services	22
Clients	16
Children	35
Secondary Services	6

### 9 St Helens CFLC

Client Legal Services	32
Clients	20
Children	44
Secondary Services	6

### 10 Beaconsfield CFLC

Client Legal Services	12
Clients	7
Children	10
Secondary Services	7

## South

### 11 ptunarra (New Norfolk) CFLC

Client Legal Services	14
Clients	9
Children	24
Secondary Services	0

### 12 tagari lia (Bridgewater) CFLC

Client Legal Services	50
Clients	17
Children	27
Secondary Services	1

### 13 Geeveston CFLC

Client Legal Services	9
Clients	6
Children	12
Secondary Services	3

### 14 Clarence Plains CFLC

Client Legal Services	18
Clients	13
Children	24
Secondary Services	5

### 15 Chigwall CFLC

Client Legal Services	40
Clients	16
Children	32
Secondary Services	3

### 16 Hobart Womens Shelter

Client Legal Services	123
Clients	38
Children	51
Secondary Services	18

### 17 The Nest (Sorrell) CFLC

Client Legal Services	18
Clients	9
Children	24
Secondary Services	3







### 18 Saltbush (Kingston) CFLC

Client Legal Services	20
Clients	12
Children	28
Secondary Services	2

### 19 Glenorchy CFLC

Client Legal Services	2
Clients	1
Children	4
Secondary Services	0

# Six most common types of legal issues assisted through the Just Healthy Families consultations with Clients and Partner Organisations

		Number of Direct consultations	Number of Secondary Consultations	Total (%)
	Family Law	400	60	41%
	Children's issues	231	27	23%
	Family violence	122	29	13%
	Other Civil	117	10	12%
	Other Criminal	27	8	3%
	Other	65	25	8%

# Just Healthy Family Partner Organisations where JHF lawyers have visited or where staff have requested secondary consultation services

January – December 2024

## Hobart Women's Shelter

## Child and Family Learning Centres

- Beaconsfield Child and Family Learning Centre
- Burnie Child and Family Learning Centre
- Chigwell Child and Family Learning Centre
- Clarence Plains Child and Family Learning Centre
- East Devonport Child and Family Learning Centre
- East Tamar (Muylatina) Child and Family Learning Centre
- Georgetown Child and Family Learning Centre
- Glenorchy Child and Family Learning Centre
- Ptunarra (New Norfolk) Child and Family Learning Centre
- Queenstown Child and Family Learning Centre
- Ravenswood Child and Family Learning Centre
- Saltbush (Kingston) Child and Family Learning Centre
- St Helens Child And Family Learning Centre
- Tagari lia (Bridgewater) Child and Family Learning Centre
- The Nest (Sorrel) Child and Family Learning Centre
- Wayraparattee Child and Family Learning Centre
- West Ulverstone (Blue Gum) Child and Family Learning Centre
- Wynyard (Larapi) Child and Family Learning Centre

## Other

- 54 REASONS  
Anglicare Rain Program  
Australian Childhood Foundation  
Brave Foundation  
Catholic Care  
Chaps Launceston  
Cu@Home Program Chaps  
DECYP  
Engender Equality  
Family Violence Counselling And Support Service  
Glenhaven Family Care  
GP Referral  
Integrated Family Support Service
- Jireh House  
Laurel House  
Mission Australia  
Magnolia House Womens Shelter  
Oakleigh House  
Psychology Cafe  
Safe Choices  
SECASA  
Strong Families Safe Kids  
Warrawee Womens Shelter  
Yarn Justice Central